

# Unshielded Construction - SMT / SPO Series



## Feature

1. High current and inductance capacity.
2. Specially designed for surface mounting.  
equipment, good for high density applicaton.
3. Low profile very effective in space-conscious  
applications.
4. Low resistance and high-energy storage.

## Application

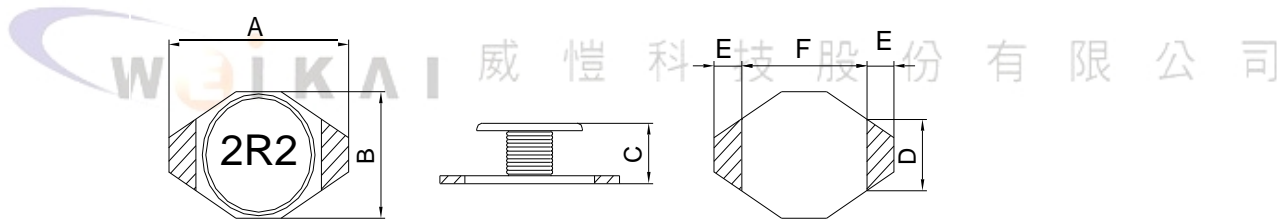
Power supply for VCR, OA equipment, LCD TV,  
Notebook PC, DC/DC Conterver, DC/AC Inverter.

## Product Identification

**SPO3316 - 2R2**  
1                      2

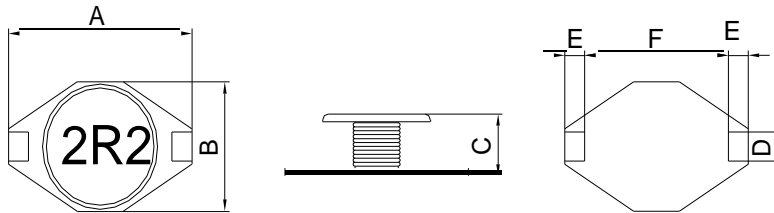
1. Series name.
2. Inductance. ( See Details )

## Configurations & Dimensions



Series Name	A	B	C	D	E	F
SPO1608	6.6(MAX)	4.45(MAX)	2.92(MAX)	1.27(MAX)	1.02(MAX)	4.32(MAX)

Unit: mm

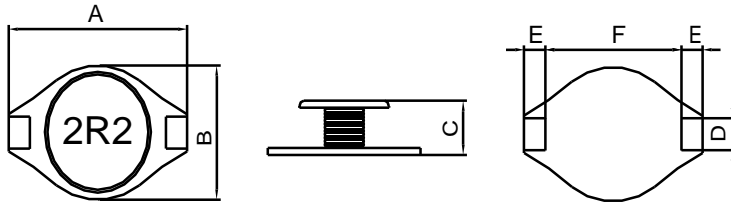


Series Name	A	B	C	D	E	F
SPO3316	13.0±0.2	10.0±0.2	5.0±0.3	2.2±0.2	2.4±0.2	7.6±0.3
SPO3340	13.0±0.2	10.0±0.2	11.0±0.3	2.2±0.2	2.4±0.2	7.6±0.3

Unit: mm

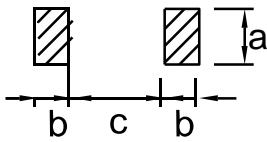
**Unshielded Construction - SMT / SPO Series**

**Configurations & Dimensions**



Series Name	A	B	C	D	E	F
SPO5022	18.6±0.3	15.0±0.3	7.0±0.5	2.2±0.2	2.4±0.2	13.3±0.3

Unit: mm



PCB Pattern

Series Name	a	b	c
SPO1608	3.56(REF)	1.4(REF)	4.06(REF)
SPO3316	2.80(REF)	3.00(REF)	7.30(REF)
SPO3340	2.80(REF)	3.00(REF)	7.30(REF)
SPO5022	2.80(REF)	3.00(REF)	12.7(REF)

Unit: mm

股份有限公司

## Unshielded Construction - SMT / SPO Series

### Electrical Characteristics / SPO1608

Part Number	Inductance ( $\mu$ H)	Test Condition ( Volt / Hz )	DC Resistance Max. ( m )	Rated Current Max. ( mA )
SPO1608-1R0 __	1.0	0.1 / 100K	50	2,900
SPO1608-1R5 __	1.8	0.1 / 100K	50	2,600
SPO1608-2R2 __	2.2	0.1 / 100K	70	2,300
SPO1608-3R3 __	3.3	0.1 / 100K	80	2,000
SPO1608-4R7 __	4.7	0.1 / 100K	90	1,500
SPO1608-6R8 __	6.8	0.1 / 100K	130	1,200
SPO1608-100 __	10.0	0.1 / 100K	160	1,100
SPO1608-150 __	15.0	0.1 / 100K	230	900
SPO1608-220 __	22.0	0.1 / 100K	270	700
SPO1608-330 __	33.0	0.1 / 100K	510	580
SPO1608-470 __	47.0	0.1 / 100K	640	500
SPO1608-680 __	68.0	0.1 / 100K	860	500
SPO1608-101 __	100.0	0.1 / 100K	1,270	310
SPO1608-151 __	150.0	0.1 / 100K	2,000	270
SPO1608-221 __	220.0	0.1 / 100K	3,110	220
SPO1608-331 __	330.0	0.1 / 100K	3,800	180
SPO1608-471 __	470.0	0.1 / 100K	5,060	160
SPO1608-681 __	680.0	0.1 / 100K	9,200	140
SPO1608-102 __	1000.0	0.1 / 100K	13,800	100

※ Rated current that will cause initial inductance value approximately 10% rolloff or temperature rise approximate 40°C without core loss.

## Unshielded Construction - SMT / SPO Series

### Electrical Characteristics / SPO3316

Part Number	Inductance ( $\mu$ H)	Test Condition ( Volt / Hz )	DC Resistance Max. ( m )	Rated Current Max. ( mA )
SPO3316-1R0 __	1.0	0.1 / 100K	9	9,000
SPO3316-1R5 __	1.4	0.1 / 100K	10	8,000
SPO3316-2R2 __	2.2	0.1 / 100K	12	7,000
SPO3316-3R3 __	3.3	0.1 / 100K	15	5800
SPO3316-4R7 __	4.7	0.1 / 100K	18	5200
SPO3316-6R8 __	6.8	0.1 / 100K	27	4300
SPO3316-100 __	10.0	0.1 / 100K	38	3400
SPO3316-150 __	15.0	0.1 / 100K	46	3000
SPO3316-220 __	22.0	0.1 / 100K	85	2500
SPO3316-330 __	33.0	0.1 / 100K	100	2000
SPO3316-470 __	47.0	0.1 / 100K	140	1800
SPO3316-680 __	68.0	0.1 / 100K	200	1400
SPO3316-101 __	100.0	0.1 / 100K	280	1100
SPO3316-151 __	150.0	0.1 / 100K	400	900
SPO3316-221 __	220.0	0.1 / 100K	610	800
SPO3316-331 __	330.0	0.1 / 100K	1020	1,000
SPO3316-471 __	470.0	0.1 / 100K	1270	500
SPO3316-681 __	680.0	0.1 / 100K	2020	400
SPO3316-102 __	1000.0	0.1 / 100K	3000	300

### Electrical Characteristics / SPO3340

Part Number	Inductance ( $\mu$ H)	Test Condition ( Volt / Hz )	DC Resistance Max. ( m )	Rated Current Max. ( mA )
SPO3340-100 __	10.0	1.0 / 100K	40	8,000
SPO3340-150 __	15.0	1.0 / 100K	50	7,000
SPO3340-220 __	22.0	1.0 / 100K	66	5,500
SPO3340-330 __	33.0	1.0 / 100K	80	4,000
SPO3340-470 __	47.0	1.0 / 100K	110	3,800
SPO3340-680 __	68.0	1.0 / 100K	170	3,000
SPO3340-101 __	100.0	1.0 / 100K	220	2,500
SPO3340-151 __	150.0	1.0 / 100K	340	2,000
SPO3340-221 __	220.0	1.0 / 100K	440	1,600
SPO3340-331 __	330.0	1.0 / 100K	700	1,200
SPO3340-391 __	390.0	1.0 / 100K	860	1,100
SPO3340-471 __	470.0	1.0 / 100K	950	1,000
SPO3340-681 __	680.0	1.0 / 100K	1,200	1,000
SPO3340-102 __	1000.0	1.0 / 100K	2,000	800

※ Rated current that will cause initial inductance value approximately 10% rolloff or temperature rise approximate 40°C without core loss.

## Unshielded Construction - SMT / SPO Series

### Electrical Characteristics / SPO5022

Part Number	Inductance ( $\mu$ H)	Test Condition ( Volt / Hz )	DC Resistance Max. ( m )	Rated Current Max. ( mA )
SPO5022-1R0 _	1.0	0.1 / 100K	9	17,000
SPO5022-1R5 _	1.5	0.1 / 100K	12	16,000
SPO5022-2R2 _	2.2	0.1 / 100K	14	16,000
SPO5022-3R3 _	3.3	0.1 / 100K	18	14,000
SPO5022-5R6 _	5.6	0.1 / 100K	20	12,000
SPO5022-100 _	10.0	0.1 / 100K	31	8,000
SPO5022-150 _	15.0	0.1 / 100K	36	7,000
SPO5022-220 _	22.0	0.1 / 100K	47	6,000
SPO5022-330 _	33.0	0.1 / 100K	66	5,000
SPO5022-470 _	47.0	0.1 / 100K	86	4,000
SPO5022-680 _	68.0	0.1 / 100K	130	3,000
SPO5022-101 _	100.0	0.1 / 100K	190	2,400
SPO5022-151 _	150.0	0.1 / 100K	250	2,100
SPO5022-221 _	220.0	0.1 / 100K	380	1,900
SPO5022-331 _	330.0	0.1 / 100K	560	1,100
SPO5022-471 _	470.0	0.1 / 100K	850	1,100
SPO5022-681 _	680.0	0.1 / 100K	1100	960
SPO5022-102 _	1000.0	0.1 / 100K	1300	800

※ Rated current that will cause initial inductance value approximately 10% rolloff or temperature rise approximate 40°C without core loss.